



NAPA SAFETY SUMMIT 2026

SAFETY · EFFICIENCY · AUTOMATION

NAPA Product news



Product owners



Tommi Vihavainen
Product Owner

Logbook Business Line
NAPA



Sami Koponen
Product Owner

Checklists,
Fleet Intelligence
NAPA



Christian Aminoff
Product Owner

Hotel Records
NAPA



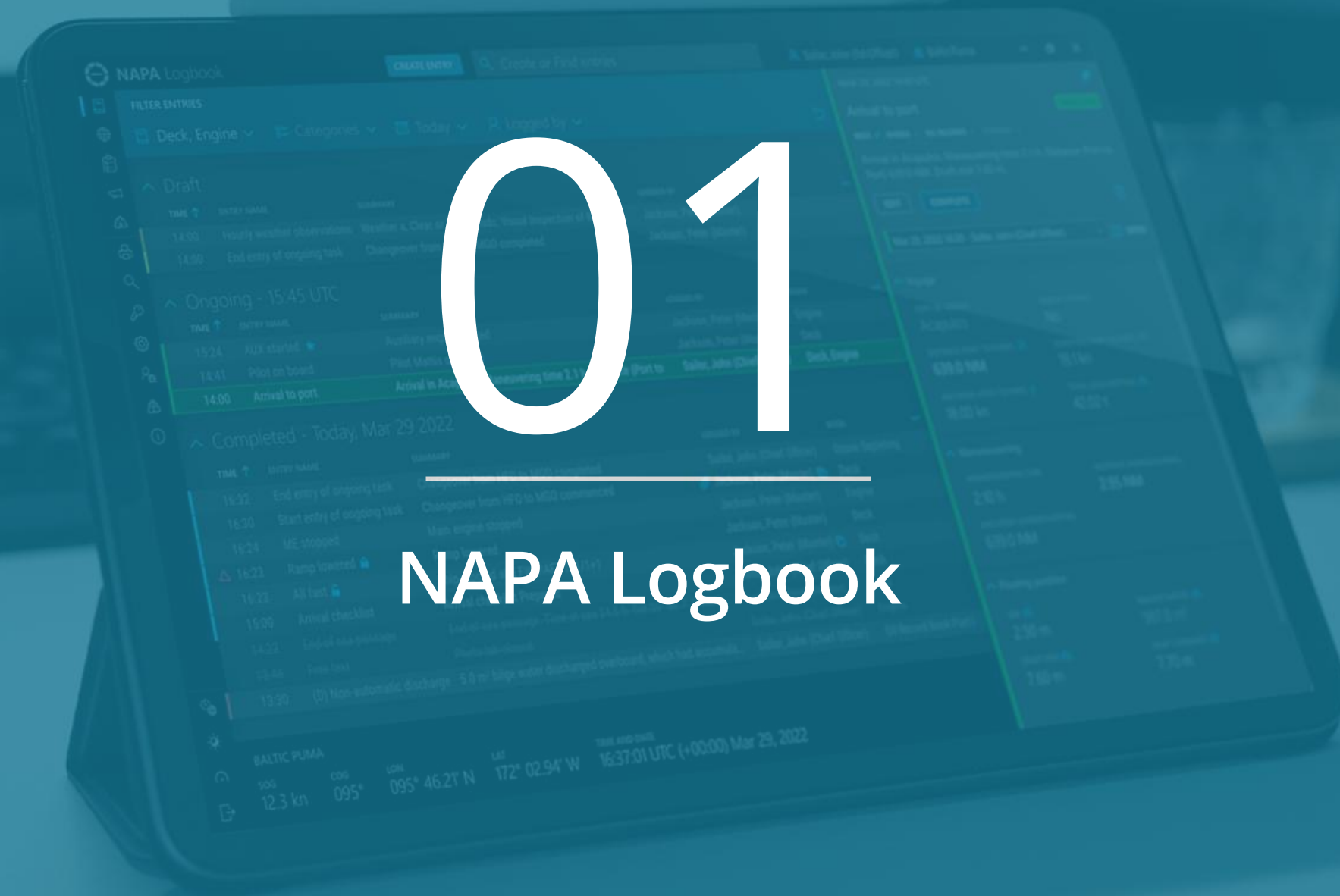
Emmi Helanne
Product Owner

Stability Business Line
NAPA



24.3.2026

NAPA Product News



01

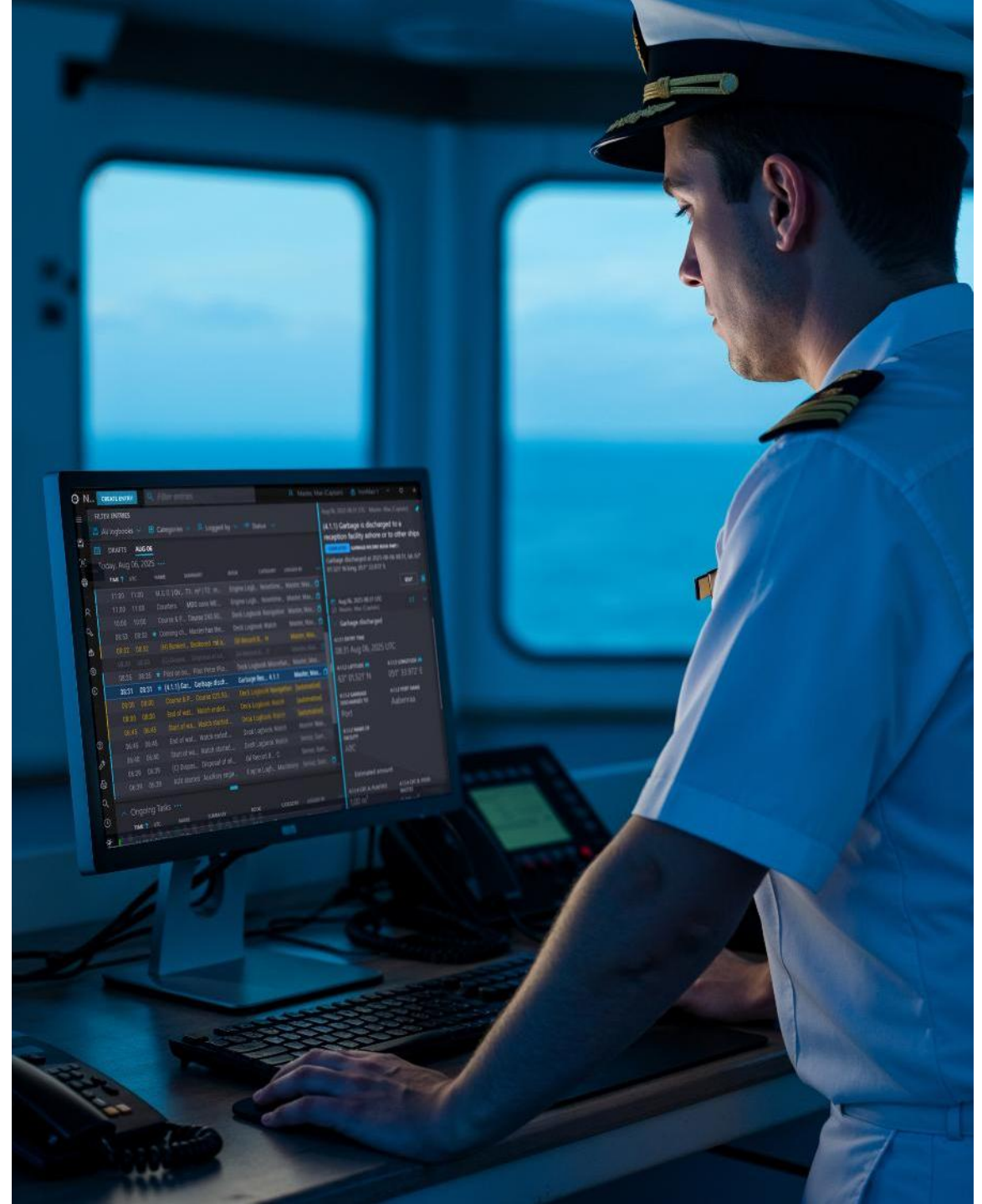
NAPA Logbook

BALTIC PUMA
SOG 12.3 kn COS 095° LOB 095° 46.21' N LAT 172° 02.94' W
Time and date 16:37:01 UTC (+00:00) Mar 29, 2022

NAPA Logbook news

The renewed NAPA Logbook was launched in 2023.

- About 60% of the fleet of 400+ ships has been now migrated to the new version.
- Development has continued – flow of new features and performance improvements in the period since the launch. Some highlights will be presented.





NAPA Logbook - highlights

Highlights from recent development and upcoming features in next 2026.1 version:

- New Captain's Orders feature
- Co-signing of individual record books
- Searching and printing more flexibility
- QR codes

Signing of individual logbooks

SIGN LOGBOOK

Select the logbook you want to sign:

LOGBOOK

LOGBOOK DAY

ⓘ Signing this logbook will disable all manual and automatic updates, and prevent any further entry changes.

I have reviewed the selected logbook for the selected day, and I will sign it

			Engineer)
			Doe, John (Chief Engineer)
2026 UTC	Permit name	Work requiring lockout and tagout	Doe, John (Chief Engineer)
	Location of work		

Signing history
Doe, John (Chief Engineer) signed logbook Engine Logbook on Mar 17, 2026 07:10 UTC
Doe, John (Chief Engineer) unsigned logbook Engine Logbook on Mar 17, 2026 07:16 UTC
Doe, John (Chief Engineer) signed logbook Engine Logbook on Mar 17, 2026 07:16 UTC
Sailor, Tom (Captain) signed logbook day on Mar 17, 2026 07:18 UTC



The Orders Feature

NAPA Logbook CREATE ENTRY Filter entries Administrator

ALL LOGBOOKS LOGBOOKS

NIGHT ORDERS Night orders x Standing Orders x

STANDING ORDERS BY STATUS

Night orders for the last 30 days (3)

TIME	BOOK	NAME	SUMMARY
08:44 Mar 17	Deck Logbook	Master's nig	
08:45 Mar 17	Deck Logbook	Standing orders	Standing orders Call the Master immediately if: Visibilit...
09:42 Mar 12	Deck Logbook	Standing orders	Standing orders Call the Master immediately if: Visibilit...
09:43 Mar 10	Deck Logbook	Standing orders	Standing orders Call the Master immediately if: Visibilit...

Standing orders for the last year (3)

Ongoing Tasks (3)

TIME	NAME	SUMMARY	BOOK	CATEGORY	LOGGED BY
✓ 16:55 Mar 16	Work permit open	Permit for Work r...	Deck Logbook, Engi...	Miscellaneous	Doe, John (Chief...
✓ 16:02 Mar 16	(I) Overboard val...	Overboard valve...	Oil Record Book	I	Doe, John (Chief...
✓ 10:00 Mar 16	Work permit open	Permit for Extern...	Deck Logbook, Engi...	Miscellaneous	Doe, John (Chief...

SOG 9.7 kn COG 227.0° LAT 00° 16.900' N LONG 000° 03.450' E TIME AND DATE Mar 17, 2026 10:41 UTC GPS

Standing orders

COMPLETED DECK LOGBOOK

Standing orders Call the Master immediately if: Visibility drops below 2 nautical miles Any navigational aid is not sighted at expected time/position There is any doubt whatsoever about the sa...

EDIT

Mar 17, 2026 08:45 UTC
(2) Administrator (Administrator)

Page 1

ENTRY TIME
08:45 17 Mar 2026 UTC

REMARKS
Call the Master immediately if: Visibility drops below 2 nautical miles Any navigational aid is not sighted at expected time/position There is any doubt whatsoever about the safety of the vessel Wind increases above Force 7 or sea state deteriorates significantly Any machinery alarm or malfunction is reported by the Engine Room

Attachments (0)



Custom report printing



PRINT

LOGBOOK VOYAGE REPORTING CUSTOM

PRINT NAME
Weather Observations Between Days ▼ **PRINT**

STARTDATE * ▼

ENDDATE * ▼

WEATHER OBSERVATIONS

SHIP NAME Erasmus

IMO NUMBER IMO1234567

ENTRIES FROM: Jun 30, 2025 TO: Jul 2, 2025

Weather Observations				
Time	Weather State	Temperature	Wind	Swell
01-Jul-2025 13:06	Clear	Air: 2 °C, Sea: 2 °C	Calm BF, Direction: N	0 DS, Direction: NE
02-Jul-2025 10:54	Snowstorm	Air: 1 °C, Sea: 11 °C	5 BF, Direction: SW	1 DS, Direction: SW

Entry template QR codes

The screenshot displays a software interface with two main panels. The left panel, titled 'CREATE ENTRY', features a search bar and a list of templates. The right panel, titled 'ALL LOGBOOKS', shows a table of draft entries. A 'TEMPLATE INFO' dialog box is open over the 'Notice to ECR' template, displaying a QR code and associated details.

CREATE ENTRY

Find entry templates

ALL ENTRIES ONGOING FAVORITE

- DECK, OFFICIAL
- Monthly tests
ENGINE, OFFICIAL
- NAPA Log change request
DECK, ENGINE, FUEL
- Noon observations
DECK
- ☆ Notice to ECR **CREATE**
DECK
- Send notice to ECR
NAVIGATION
- Notice to ECR (Engine)
ENGINE
- Officer's sign off
DECK
- Officer's sign on
DECK
- Oil Bunkering
DECK
- Open Suction Stripping of Ballast Water Tanks
ENGINE

ALL LOGBOOKS LOGBOOKS


Drafts Mar 17

Draft entries for the last 7 days (6)

TIME	NAME	SUMMARY	BOOK	CATEGORY	LOGGED BY
11:30 Mar 16	(2.1) Afte...	(2.1) Ope...	Biofouling, D...	2.1	Thoron, S...
	Tracer	Administr...			
	Tracer	Administr...			
	Tracer	Administr...			
	Tracer	Administr...			
	Tracer	Administr...			

TEMPLATE INFO

Notice to ECR



Template Id: _3072
Book: Deck
Category: Navigation
Description:
Send notice to ECR

Rules:

Triggered Templates Rule:
templateXmlIds:_30721 (Notice to ECR (Engine

PRINT **COPY**

Create entry
Template Info



NAPA Logbook - highlights

- **User and identity management:**
 - Active Directory integration for centralized user management
 - Qualified Signature using EU approved smart card tokens
 - **Technology:**
 - Server software renewal
 - Java and other library upgrades
 - DB upgrade
 - 64bit architecture
- performance, security

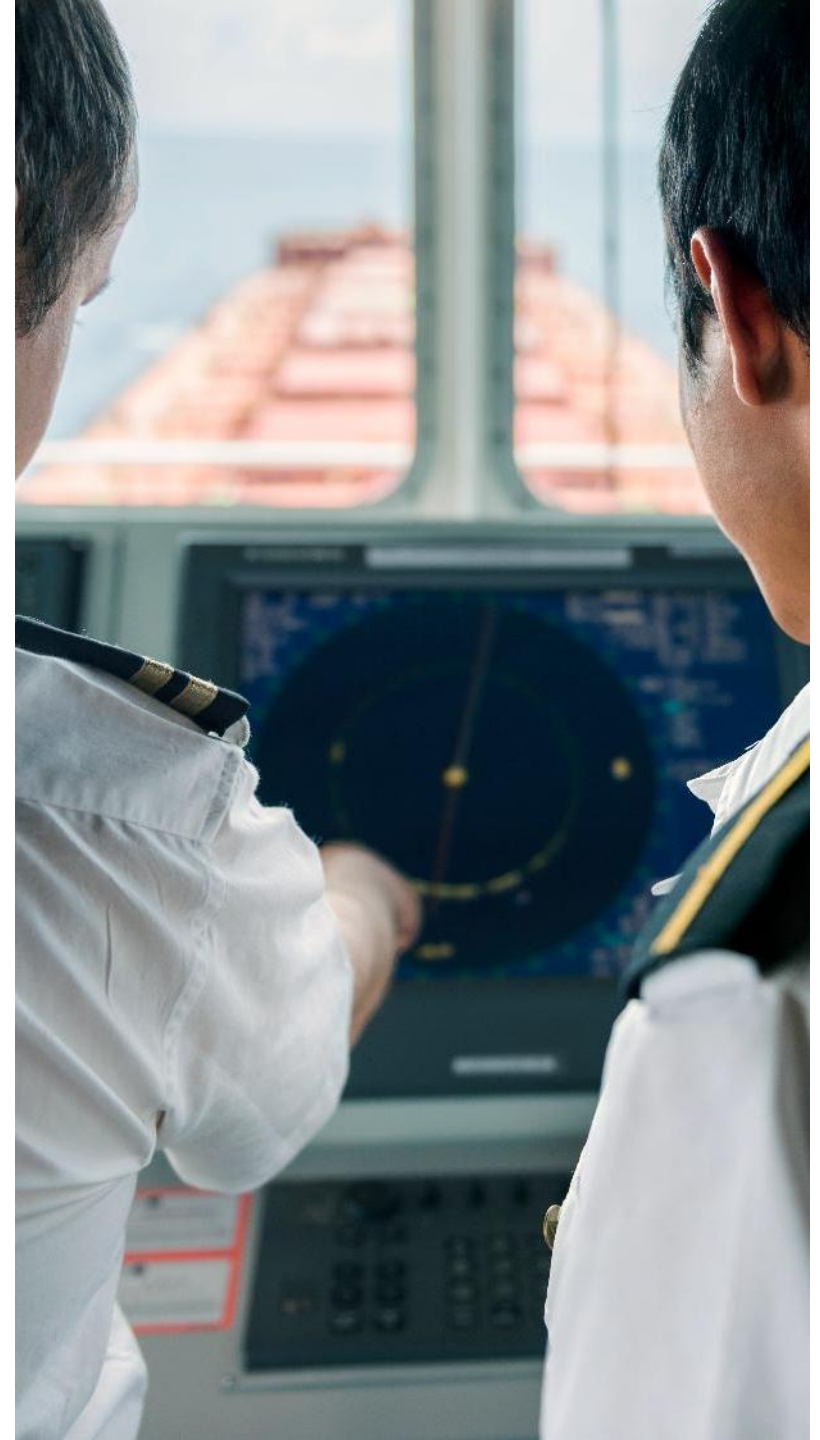
NAPA Logbook – regulatory news

IMO - International Maritime Organization

- Recent changes
 - Ballast Water Record Book
 - Oil Record Book part I
- Upcoming changes
 - Sewage Record Book
 - Delayed (2027?)
 - Cargo Record Book

Flag States

- Recent news 3/2026
 - Japan - approval of the NAPA Logbook system
 - Isle of Man – Official logbook approved
- Other flags
 - refined processes for electronic record keeping approvals



NAPA Logbook - roadmap

Focus areas in Q2/2026 and onward

- 1. Further development of key features** for the users and compliance: e.g.
 - General improvements, presentation of data etc.
 - Tank management and calculations (ORB, BWRB)
 - Bio-fuels and other reporting workflows
- 2. Introduction of the AI technology** to help users
- 3. Data integration** improvements to enable smooth business workflows between systems more easily

02

NAPA Permit to Work



24.3.2026

NAPA Product News

Introducing NAPA Permit to Work

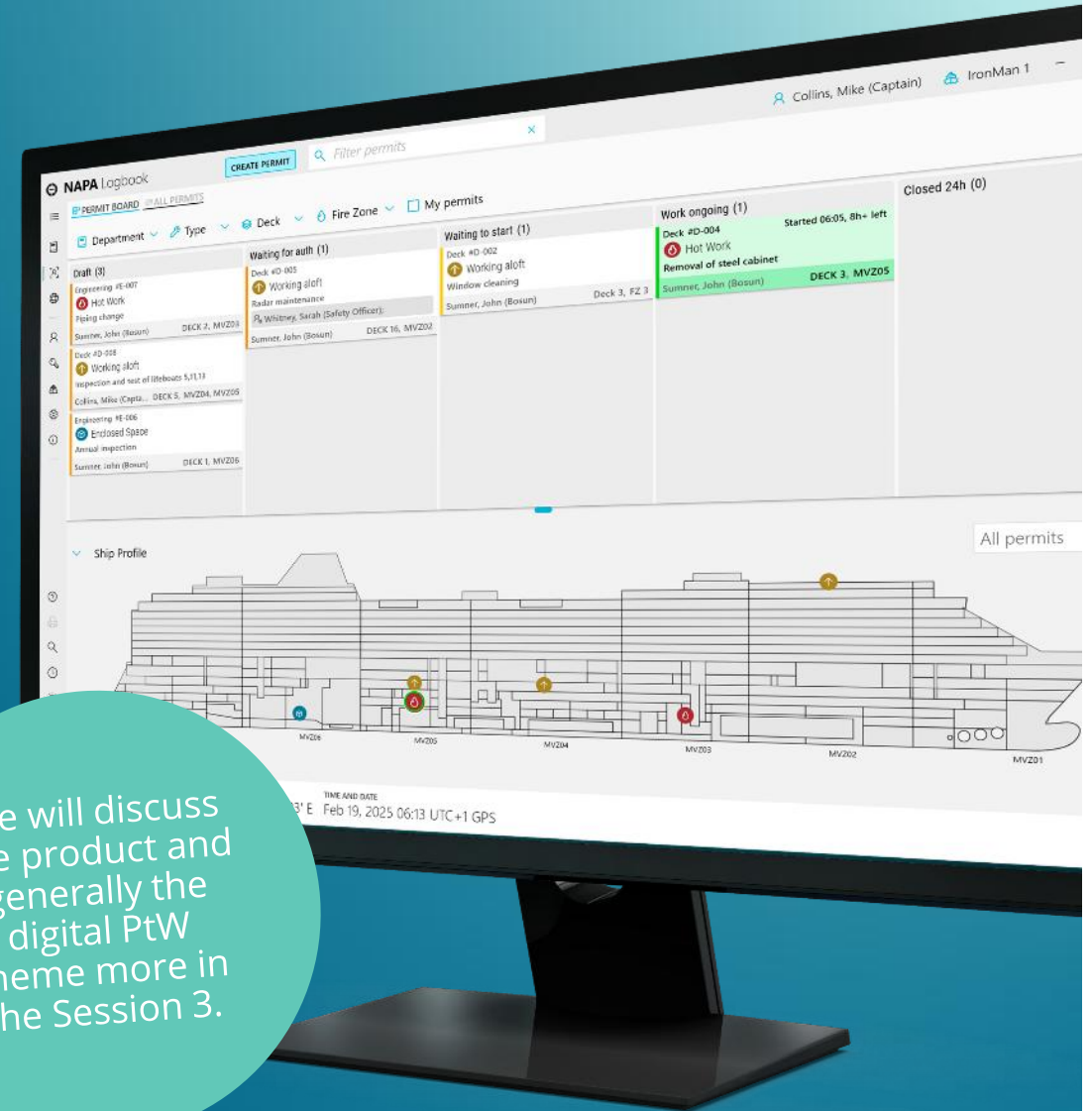
New product – officially launched to public at SMM 2024

- **Digitalizes** the paper process onboard.
- **Installed** into the NAPA Logbook framework.
- **Flexible** – to be customized per your SMS.

Status now

- Several companies started product trials in 2025.
- The first contracts have been made and the first fleet-wide roll-out has been just completed.

We will discuss the product and generally the digital PtW theme more in the Session 3.



Key milestones in NAPA Stability

NAPA Stability was launched 2022 for cruise ships, 2024 for ferries
Today we are Type 2 and 4 compliant

2025



Summer 2025

Launching large
release for cruise
vessels

2026



Summer

Launching the
NAPA Stability
for RoRo
vessels

DAY 2,
session 12
at 15:00-
15:45



Autumn

Launching the
Emergency
data flow for
test use

DAY 1,
session 5 at
17:30-18:30
Roundtable



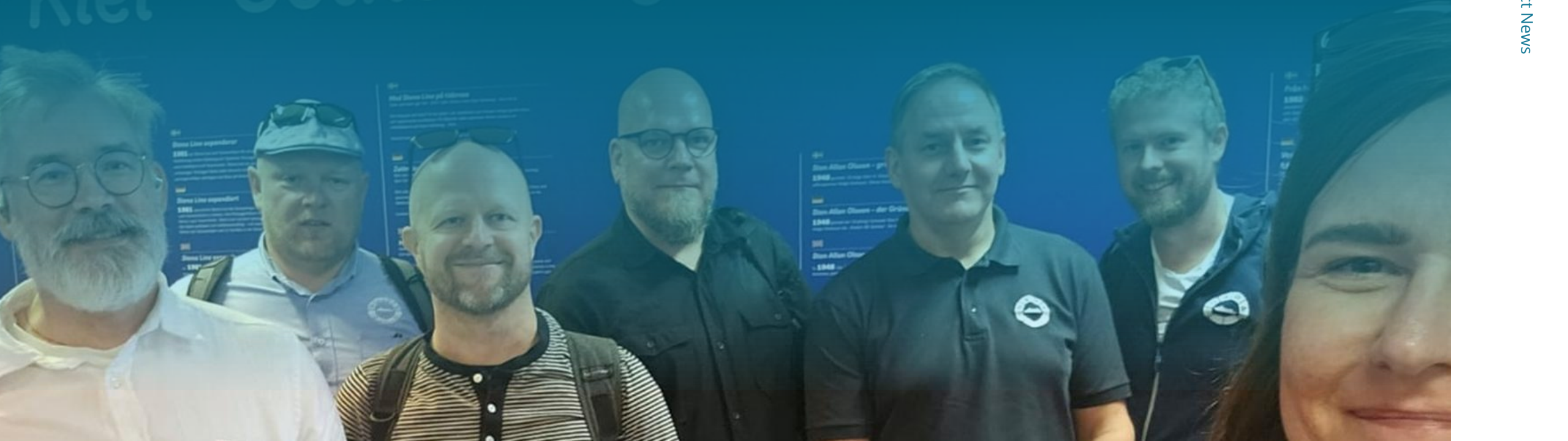
Winter

Comply with the
E26/27 regulations
and Type 3

NAPA Stability RoRo development

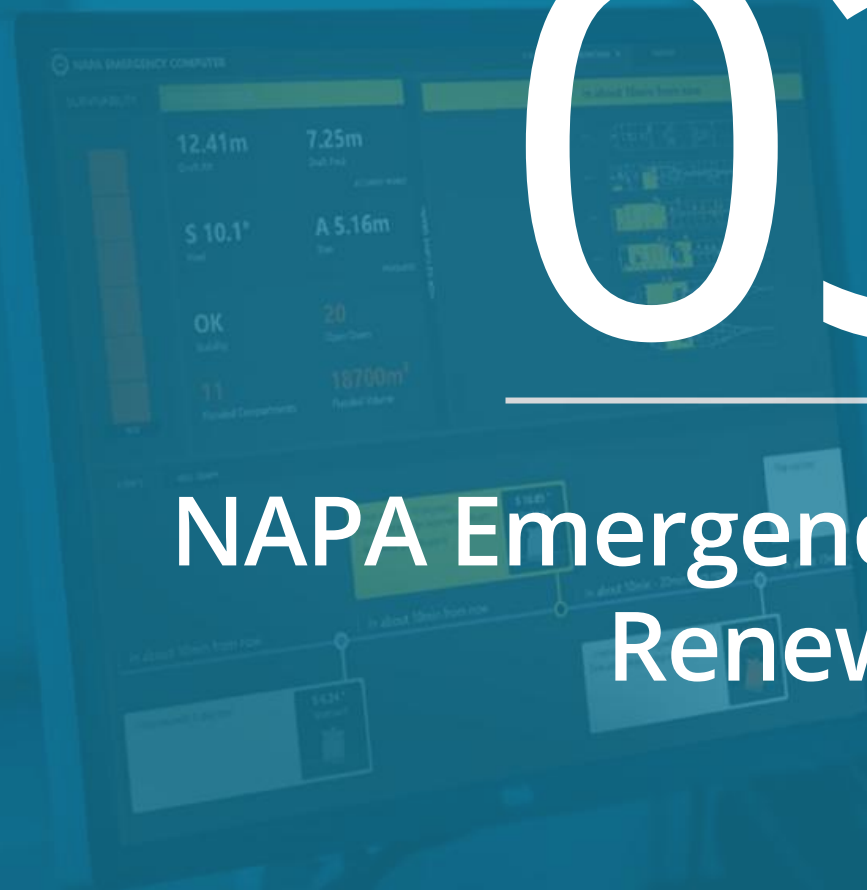
- Development started Autumn 2024
- Today two test installations
- ‘Pilot’ scope is completed:
- Focus on core cargo loading workflows
- Fulfills the NAPA Loading Computer capabilities
- Continue with the ‘Launch scope’

DAY 2,
session 12 at
15:00- 15:45
David
Svanström,
StenaLine and
Markus Tompuri,
NAPA



03

NAPA Emergency Computer Renewal



Preventing the possible

50%

of ship losses are caused by
grounding or collision.

80%

of investigated cases 2014-2023
involve the human factor.

Over 66 groundings and 16 collisions for passenger vessels 2000-2020.

(Source: Flare project 2020)



24.3.2026

NAPA Product News

Past&Future milestones



Training Scenario Editor

Damage and events are simulated

Create New Scenario

Open Scenario...

Exit to Live Mode

Scenario Settings

Scenario Name

Collision1

Events

Open water tight doors

Time: Start
Details: C6-D2; C7-D2; C14-D2; C9-D3

Notes: Doors are left open...

Disable event during training

Damage

Time: Start
Details: C9-D3 (2.6m²); C10-D2 (1.5m²)

Notes: Collision onto rock face

Close water tight doors

Time: 0:05:00
Details: C6-D2; C7-D2; C14-D2

Notes: Close all WTDs, except D9-D3 (jammed)

Disable event during training

Close water tight doors

Time: 0:20:00
Details: C9-D3

Notes: Jammed door manually shut

Disable event during training

+ ADD EVENT

SAVE SCENARIO

CALCULATE RESULTS

RUN TRAINING

Sea with Risk

Draft Fws
7.71m

Trim
0.20m

Open Doors
1

Flooded Volume
895 m³

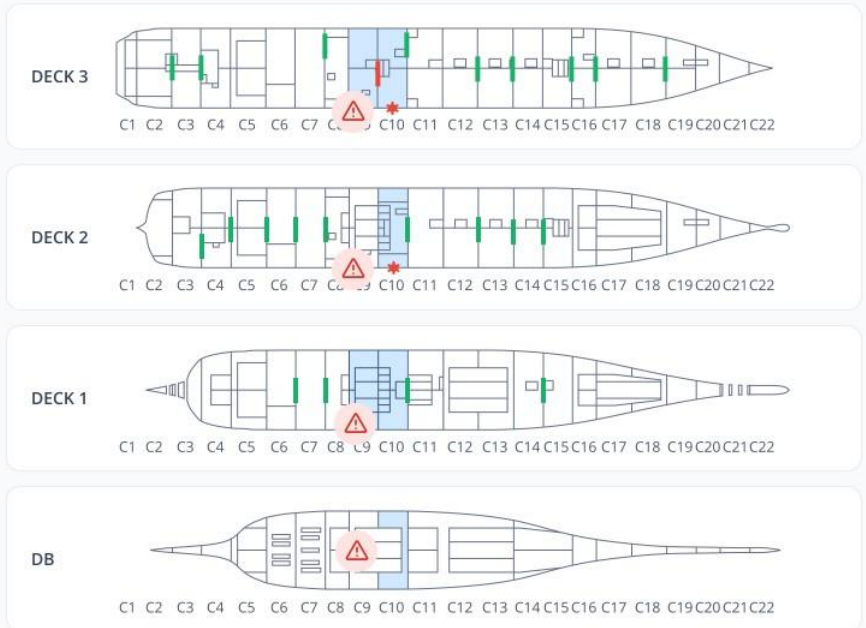
Alarms

Group by type See All

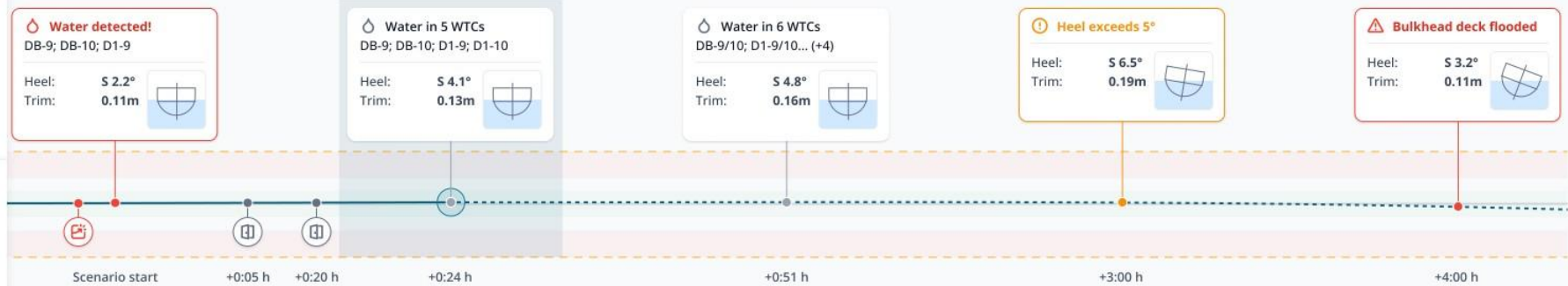
Alarm	Location	Time	Details
Water detected!	C10-DB	0:51	Volume: 2 m ³ Rate: 0.1 mm/s
Water detected!	C9-D1	0:24	Volume: 3 m ³ Rate: 0.1 mm/s
Water detected!	C10-D1	0:24	Volume: 7 m ³ Rate: 0.1 mm/s
Water detected!	C10-D2	0:01	Volume: 7 m ³ Rate: 0.1 mm/s
Water detected!	C10-D3	0:01	Volume: 19 m ³ Rate: 0.2 mm/s
Water detected!	C9-D3	0:01	Volume: 21 m ³ Rate: 0.3 mm/s
Door open	WTD03201	0:00	2h 34min ago

Decks

Flooding and Damage



Show events and ship heel Show flooding



24.3.2026

NAPA Product News



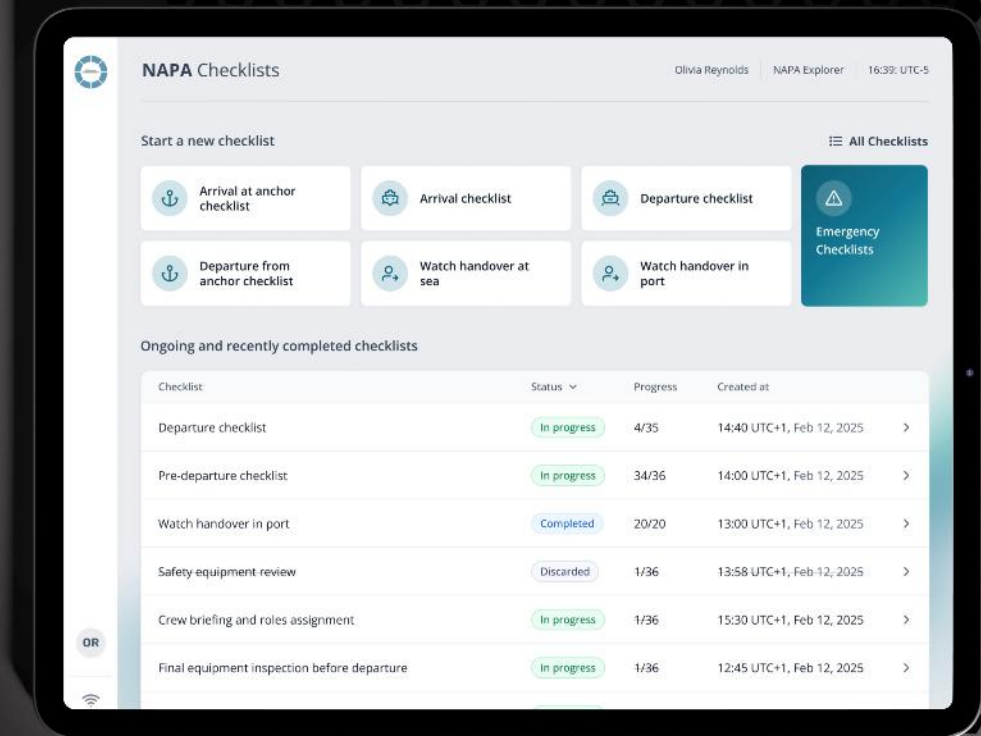
04

NAPA Checklist

Introducing NAPA Checklist

Developed since Autumn 2024

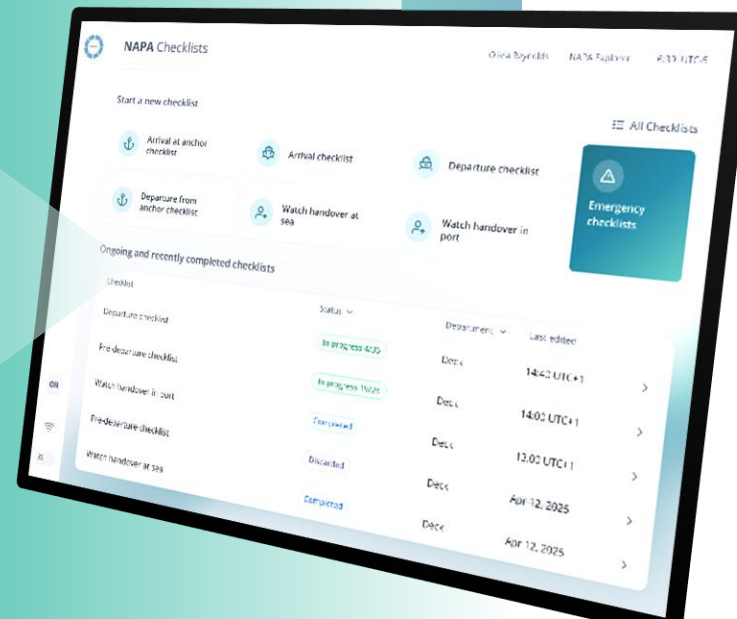
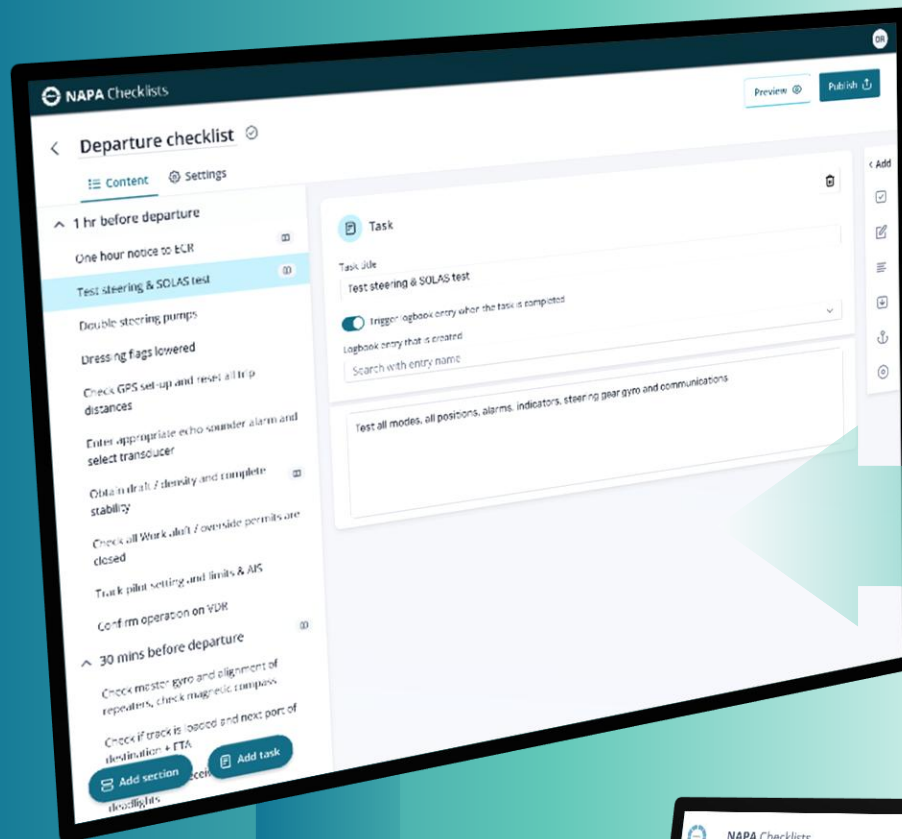
- Developed together with Crew and customers
- Several companies have been trialing the system and first commercial contract has been made
- New functionality is continuously developed and features and improvements released continuously



How It Works

The Electronic Checklist process is simple:

1. Create checklist templates based on procedures and regulations in NAPA Fleet Intelligence
2. Assign and publish checklists to departments and vessels
3. Execute checklists on mobile devices or workstations
4. Automatically capture time, user, and validation data
5. Review results instantly through dashboards and reports

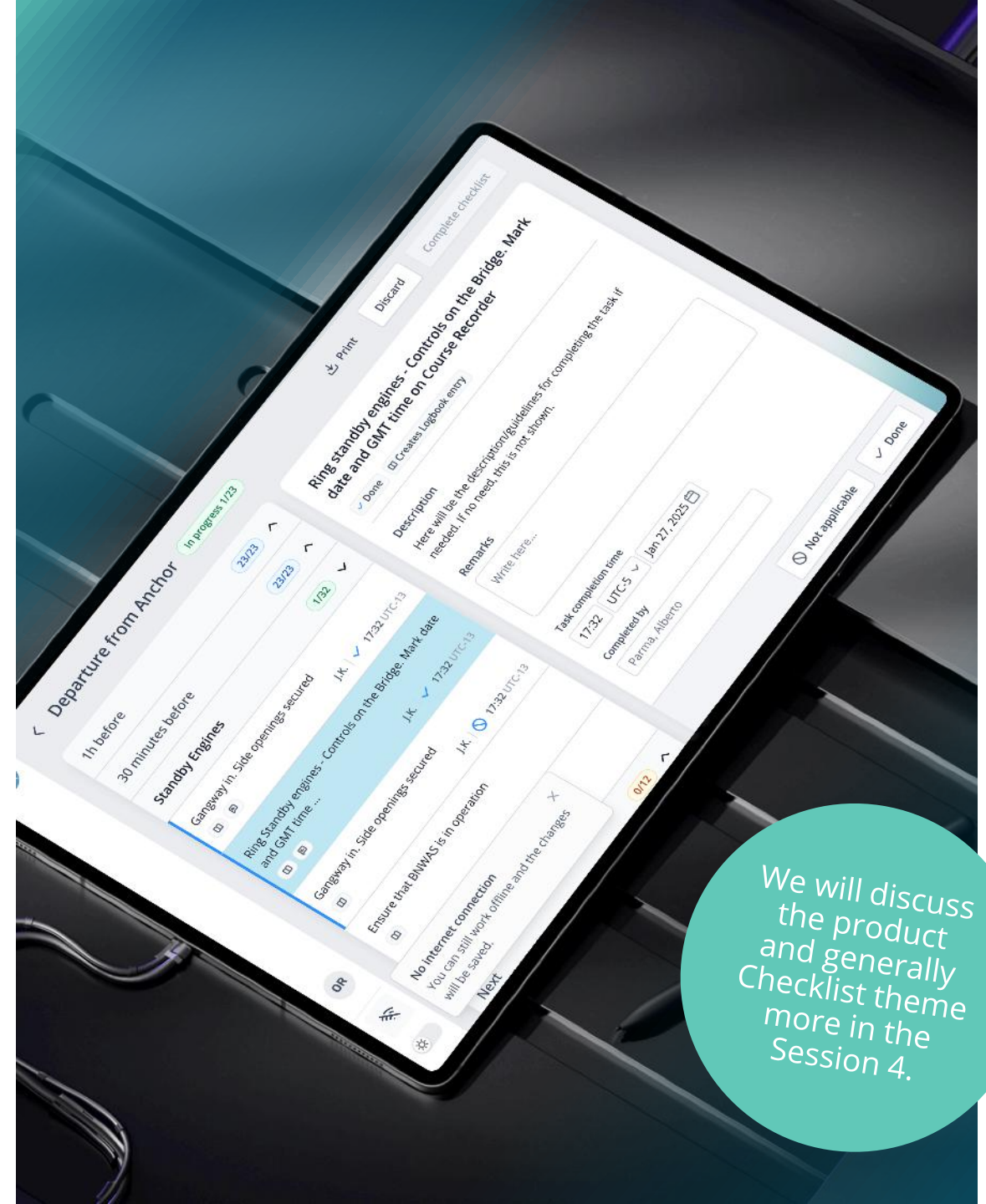


Key Features

The solution includes a set of core capabilities designed to support reliable execution

- Step-by-step guided checklist flow
- Integration to NAPA logbook templates and slots
- Mandatory fields and automatic validation*
- Automatic timestamps and user logging
- Checkbox, Dropdown, Radio button, text field, Remarks, Photo and data attachments*
- Offline execution with automatic synchronization
- Version control and full audit history

* Upcoming feature



We will discuss the product and generally Checklist theme more in the Session 4.

05

NAPA Cloud solutions



New features

- DNV Veracity integration
- Veson Integration
- PtW permits in Fleet intelligence and AI dashboard
- Environmental module
- Stability alarms
- Emergency module with official loading condition files

NAPA Fleet Intelligence Permit To Work

Budget used 0 / 9.99
Renews on 01 Apr 2026

KPI's

- Total permits: 18
- Avg Appr Time: 12111.4h
- Completion Rate: 50
- Pending Actions: 9

Requested Charts

- Permits Created Per Day**: Line chart showing the number of permits created over time (Feb 16 to Mar 2, 2026).
- Average Ongoing Duration per Permit Type**: Horizontal bar chart showing average durations for different permit types.

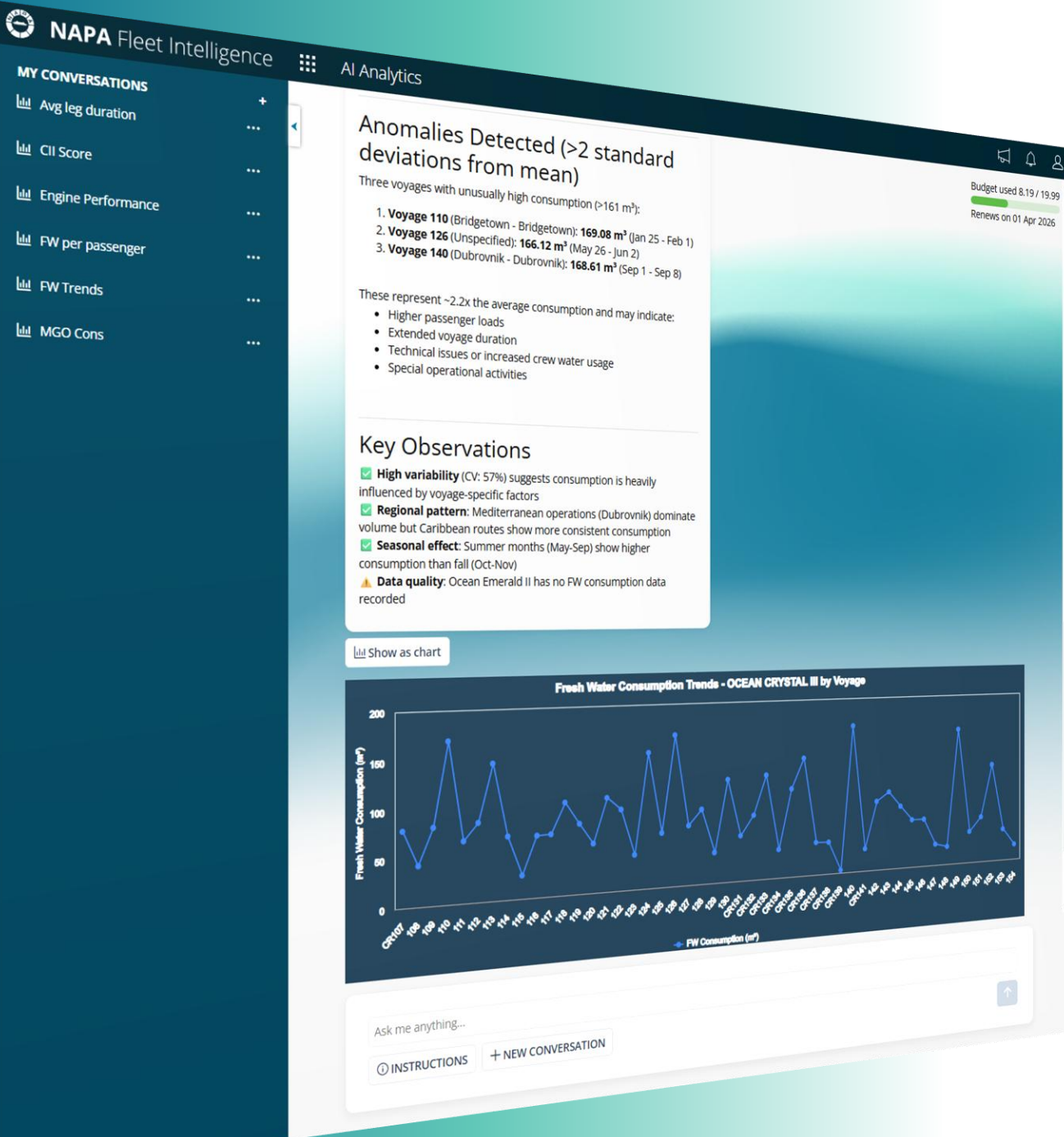
Permit Type	Average Duration (Hours)
Electrical Lock Out Tag Out	0.04 h
Work at height	17.2 h
Work Permit	4.46 h
Hot work	5.65 h
- Number of Permits by Type**: Pie chart showing the distribution of permits by type.

Permit Type	Count
Hot work	10
Work Permit	3
Work at height	3
Electrical Lock Out Tag Out	2
- Permit Distribution by Status**: Pie chart showing the distribution of permits by status.

Status	Count	Percentage
Wait to start	3	16.7%
Ongoing	3	16.7%
Wait for Authorization	3	16.7%
Closed	9	50.0%
- Permit Status: In Progress vs Everything Else**: Pie chart showing the distribution of permits by status.

Status	Count	Percentage
In Progress	0	0.0%
- Crew Members by Frequency Across All Permits**: Horizontal bar chart showing the frequency of crew members across all permits.

Member	Frequency
Stefan	2
John	2
Davos	2
sss	2



Upcoming features

- AI data Analyzer
 - Automation, Voyage reporting, Logbook data
 - Stability data
- Emergency module revamp for ER
- Emergency Computer in the cloud

AI Demo and more information tomorrow in the Session 8.

06

NAPA Hotel Records



24.3.2026

NAPA Product News

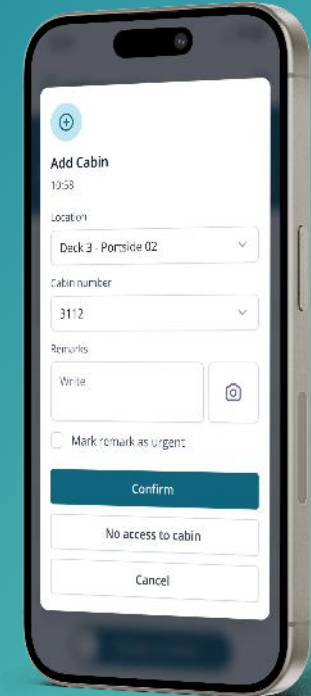
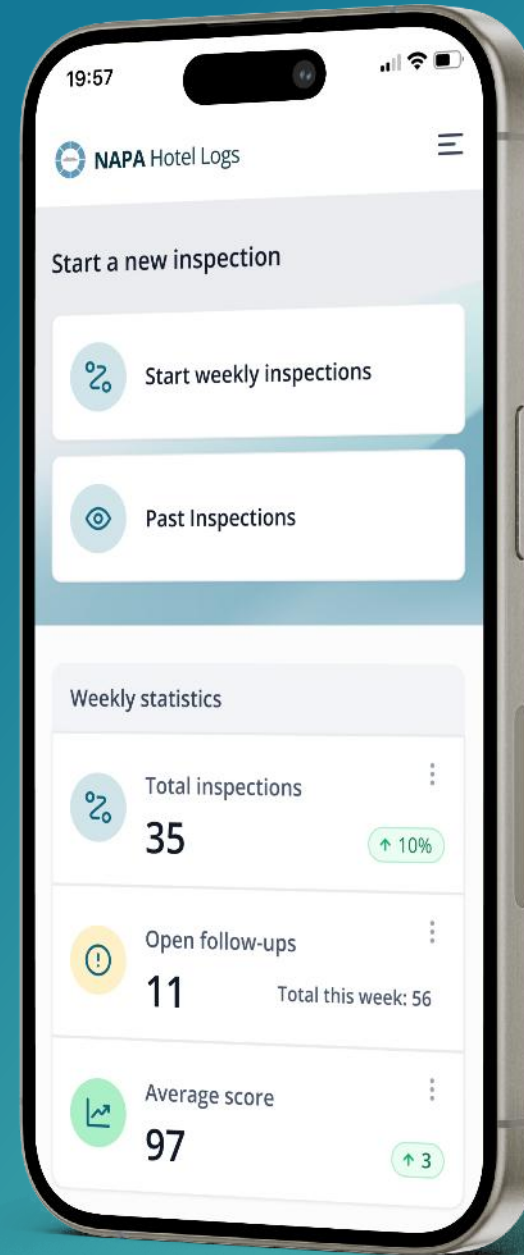
Introducing the NAPA Hotel records

We're excited to share an upcoming addition to our digital solutions portfolio: **Digital Logs for the Hotel side**. We're building something new for ship hotel operations: a system that makes 'doing it right' the easiest path — and makes proving it automatic.”.

Napa Hotel Records focuses on core capabilities like:

- Fast, structured capture
- Built-in verification and exception handling
- Searchable, exportable proof for audits
- Fleet-level insight into repeat issues and training needs
- Designed around ship constraints: offline, shift work, simplicity

Trials in
2026
Release target
2027



Thank you!

Give feedback

Scan QR code and rate the session you just attended so we can improve the event in real time. It takes ~10 seconds.

