



NAPA Fleet Intelligence

Monitoring, reporting, analysis, and optimization powered by NAPA



Advanced algorithms and hydrodynamic calculations



Safe routes



Weather & environmental monitoring



AIS data



Vessel data

NAPA Fleet Intelligence

is a user-friendly cloud-based solution for improving ship efficiency and safety.



No hardware installations or initial investments



Minimize emissions, maximize savings

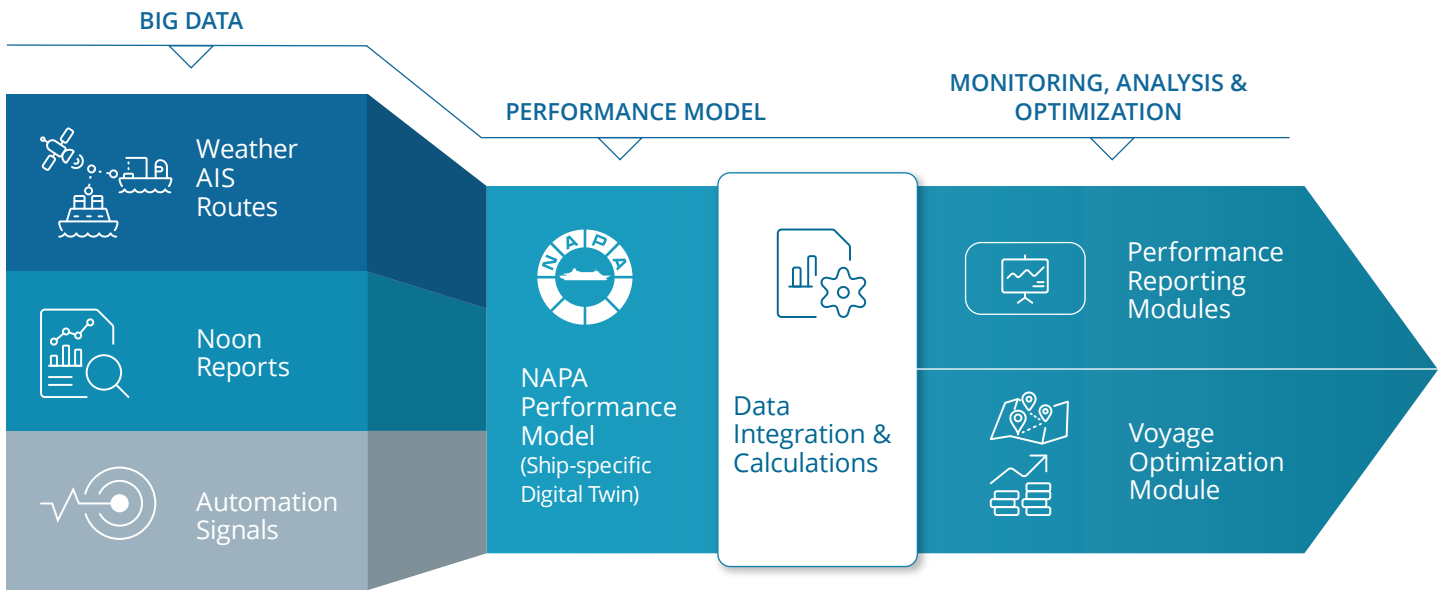


Integrates with any vessel data source you use

HOW DOES IT WORK?

Various data sources & modules for different needs

NAPA Fleet Intelligence offers insights and advice for improving technical and operational ship performance by combining open data and actual performance data collected from vessels. In addition, it enables voyage planning and stability & safety monitoring on the same platform.



MODULES

You can select different reporting, analysis, and planning modules to tailor the service to match your needs.



Fleet & Voyage Monitoring

See fleet status and analyze voyage trends



Regulatory Reporting

Comply with CII, EU MRV & IMO DCS



Technical Performance

Follow-up on vessel's technical and CII performance



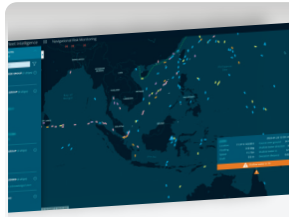
Charter Party

Compare ship performance with contract criteria



Voyage Optimization

Optimize operation and speed profiles considering the upcoming weather



Navigational Risk Monitoring

Mitigate grounding and collision risks fleet-wide



Stability & Emergency

View the stability and vulnerability status and trends



Logbook Reporting

Explore data recorded in NAPA Logbook

BENEFITS



VISIBILITY

- See fleet status & operational trends
- Easy to use web-based platform
- Alerts for noteworthy events



INSIGHT

- Understand ship performance
- Comprehensive reports
- Daily updating speed-consumption tables



CONTROL

- Keep safety, time, money, and emissions in check
- Stay on top of weather conditions
- Security (ISO 27001)



FEEDBACK

- Validate impact of energy-saving activities
- Feedback to design - Real operational data enables realistic design points for newbuildings

PARTNERS

